



# GAT MONTHLY MEMBERSHIP PROGRESS REPORT

Results as of: 2/28/2022

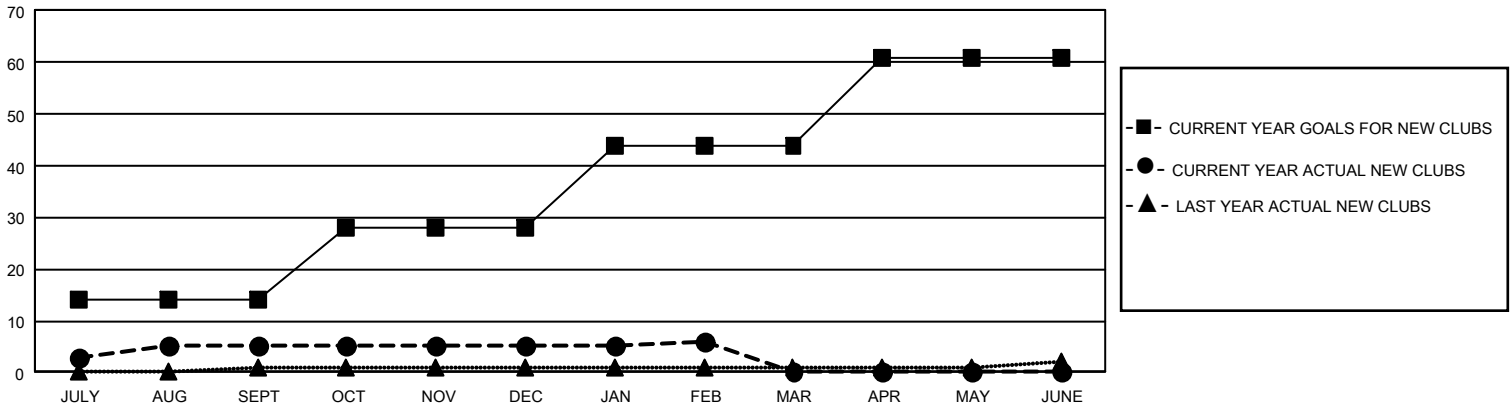
## GAT Constitutional Area 5 - China

REPORT DOES NOT INCLUDE CLUBS IN UNDISTRICTED AREAS.

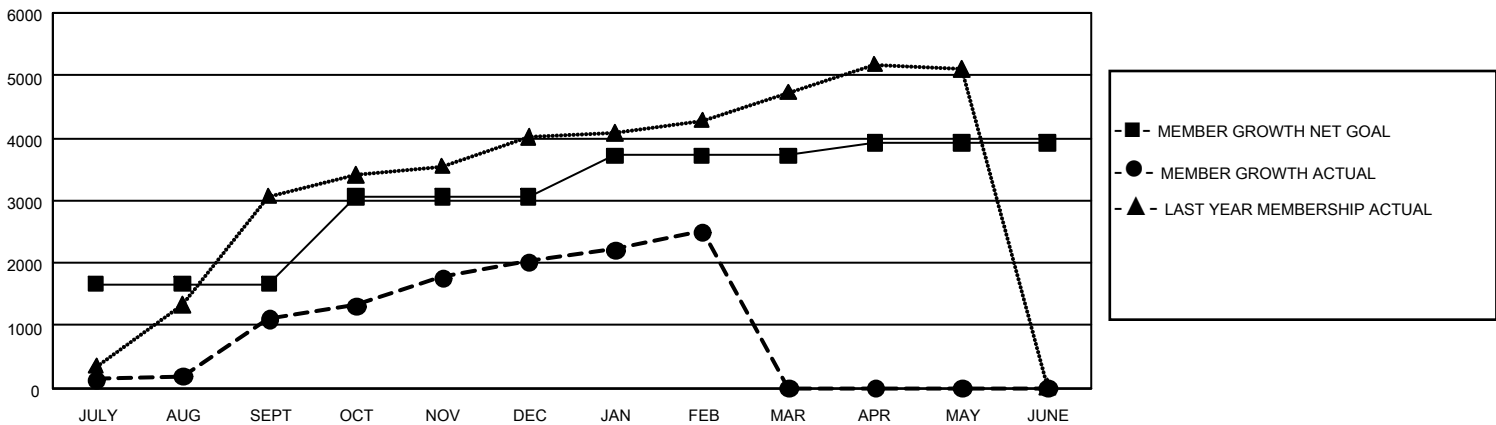
Clubs			
RESULTS FOR 2021-2022			
QUARTER	NEW CLUB GOAL	NEW CLUBS	DROPPED CLUBS
JULY/AUG/SEPT	42	5	10
OCT/NOV/DEC	42	0	3
JAN/FEB/MAR	48	1	0
APR/MAY/JUNE	51	0	0

Members			
RESULTS FOR 2021-2022			
QUARTER	MEMBER GROWTH NET GOAL	MEMBER GROWTH ACTUAL	DROPPED MEMBERS ACTUAL (including transfers)
JULY/AUG/SEPT	1668	1,765	404
OCT/NOV/DEC	1398	1,465	302
JAN/FEB/MAR	651	609	64
APR/MAY/JUNE	202	0	0

GOALS AND ACTUAL NEW CLUBS CUMULATIVE



GOALS AND ACTUAL MEMBERS CUMULATIVE



DROPPED CLUBS: 13

769 CLUBS OF 1,360 ADDED 1 OR MORE NEW MEMBERS

GENDER DISTRIBUTION

MALE	21,556 (62.12%)
FEMALE	13,144 (37.88%)
NON BINARY	0 (0.00%)
PREFER NOT TO ANSWER	0 (0.00%)

DROPPED MEMBERS

DECEASED	14
CLUB CANCELLED	90
OTHER	666
<b>TOTAL</b>	<b>770</b>

[CLICK HERE FOR CUMULATIVE MEMBERSHIP DATA](#)

TOTAL FAMILY UNIT MEMBERS	2,206
FAMILY MEMBERS PAYING HALF DUES	1,133